

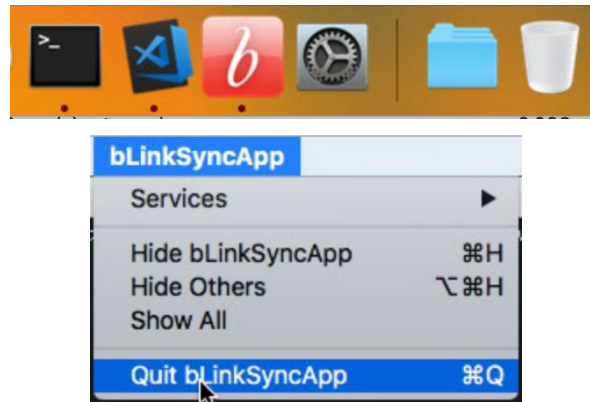
Upgrade Instructions for bLink Sync (Tops)

Fri Feb 9 10:12:40 PST 2018

These instructions will guide you through upgrading your bLink Sync desktop application for the Tops Ortho PMS. This upgrade will need to be performed in order for the application to continue working. Please make sure you are an administrator before attempting this upgrade.

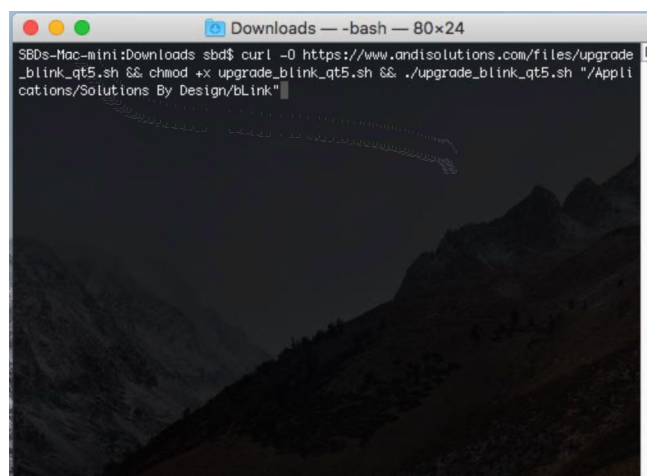
1. Make sure that bLink is not running. If it is, quit the application by clicking on the red 'b' icon in your dock and selecting the menu item "**bLinkSyncApp**" → **Quit**

bLinkSyncApp:



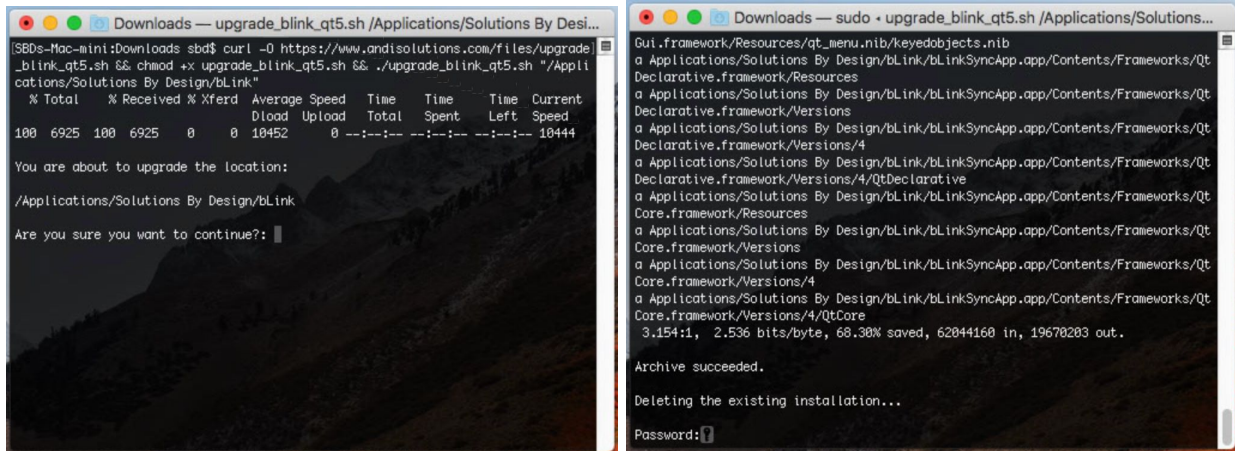
2. Open the Terminal app (**Applications** → **Utilities** → **Terminal**).
3. Copy and paste the following code into the Terminal app:

```
curl -O https://www.andisolutions.com/files/upgrade_blink_qt5.sh && chmod +x  
upgrade_blink_qt5.sh && ./upgrade_blink_qt5.sh "/Applications/Solutions By  
Design/bLink"
```

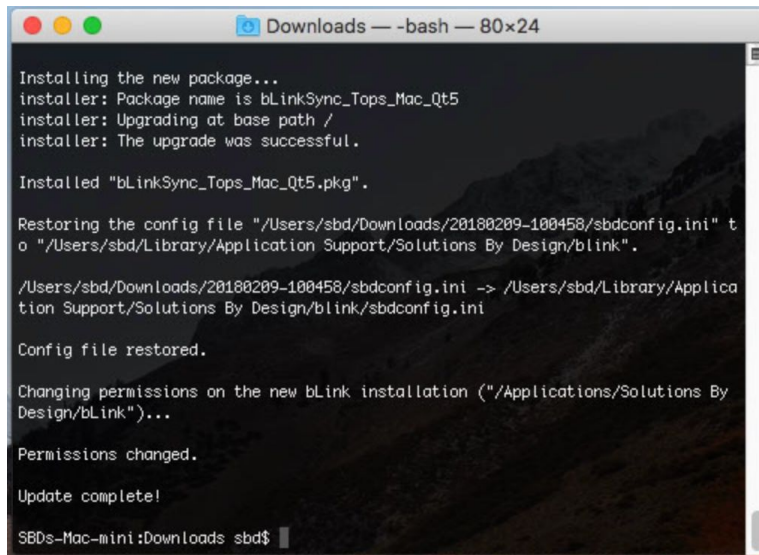


4. Follow the on-screen instructions. Press 'Y' when prompted to continue after confirming the current location of your existing bLink Install. Then type your administrator password when prompted (you won't see anything happen on screen, but type it anyway and press

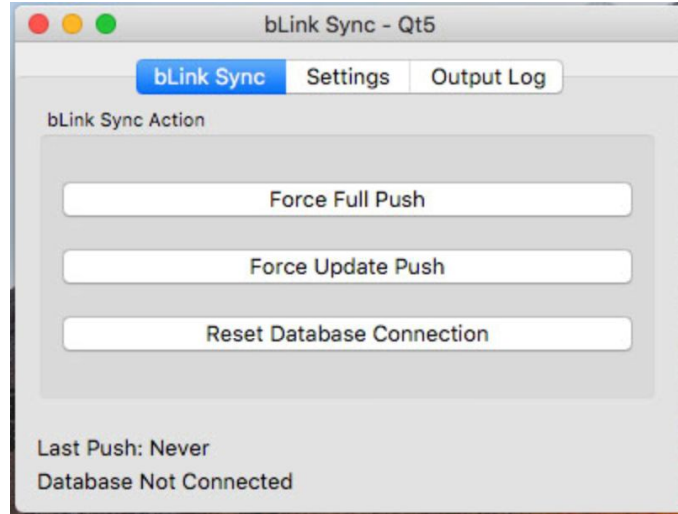
ENTER). You must be an administrator user in order for the upgrade to have the proper permissions.



5. After the upgrade is complete, you should see a success message:



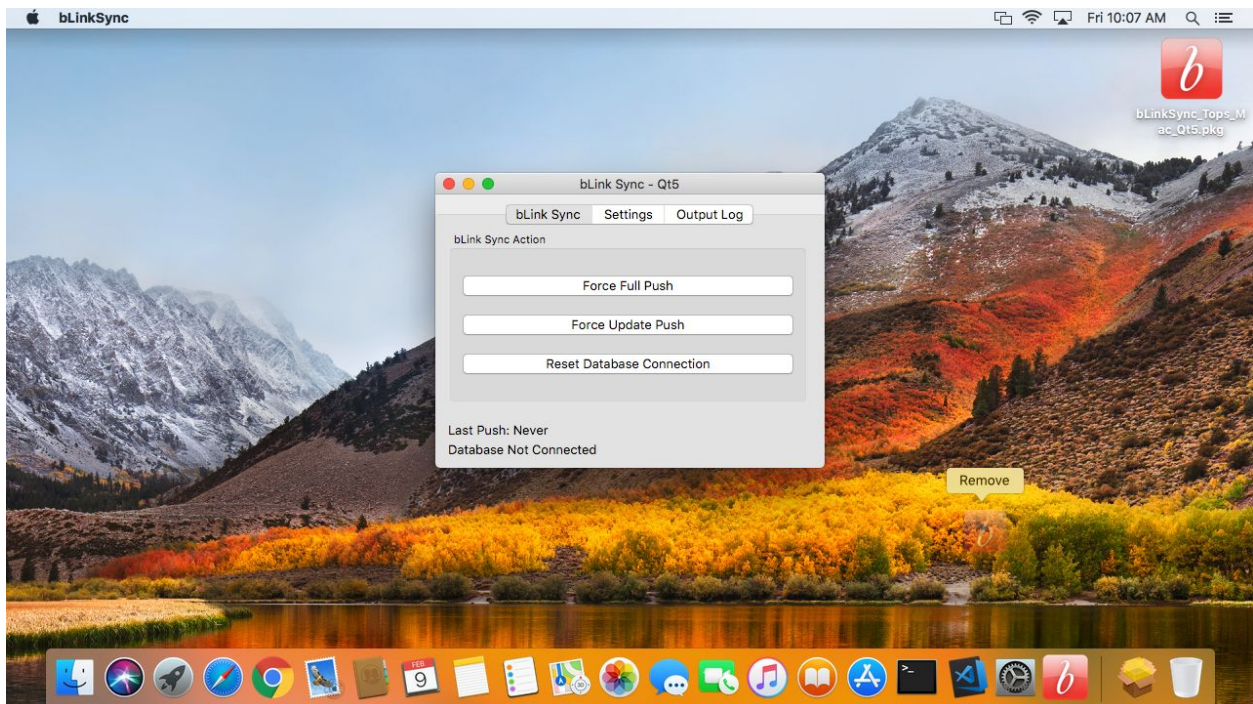
6. At this point the upgrade is complete. You can launch bLink from **Applications** → **Solutions By Design** → **bLink** → **bLinkSync**. Please note that the name of the application should have change from “V@b_GrnbW5 dd” to “V@b_GrnbW. You can also confirm that the upgrade was successful if the title of the window now says “V@b_`GrnbW !`E h)” instead of just “V@b_`GrnbW



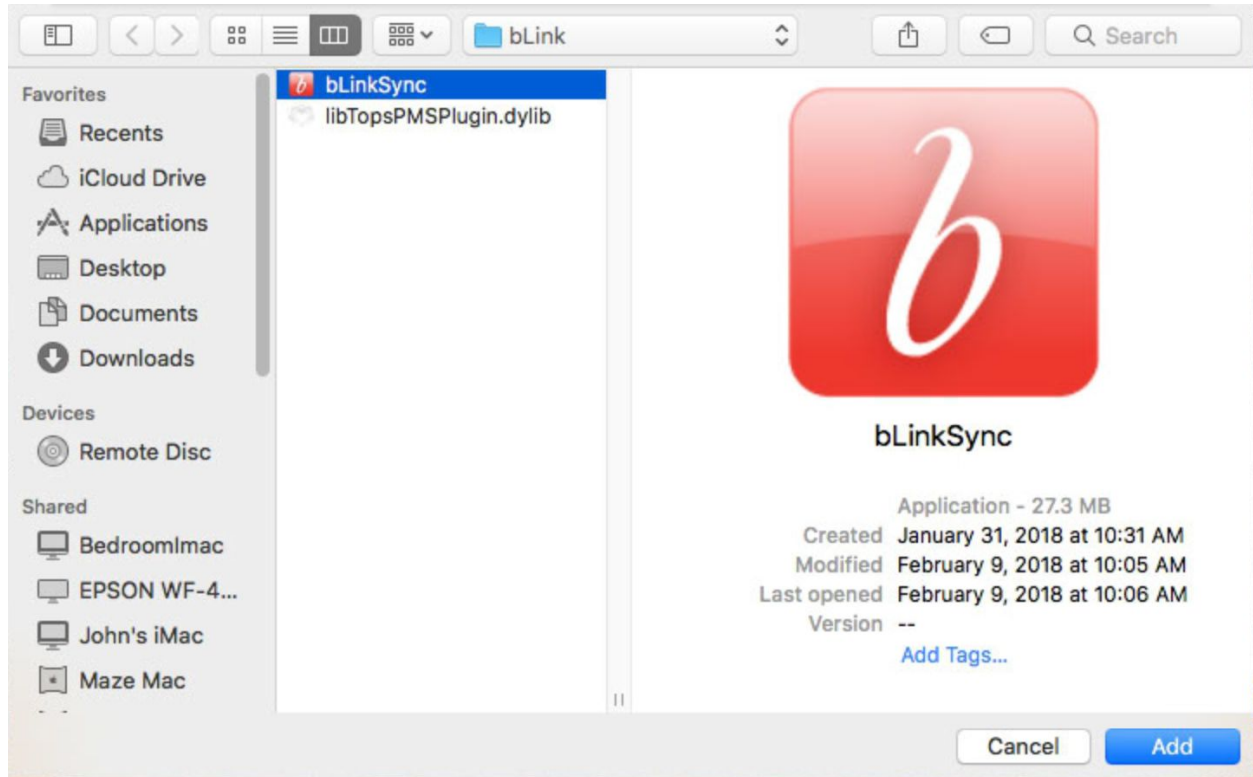
Optional Steps

Once the main upgrade is complete, there are a couple of items you can clean up if necessary. Any old shortcuts in the dock and any startup items to the previous application should be updated.

Dock Shortcut



To cleanup old dock icons, drag the “V@b_GmbW5 dd” icon up and off the dock. Let go when it says “Remove”.



Then goto **Applications** → **Solutions By Design** → **bLink** → **bLinkSync** and drag the new application back to the dock to restore the shortcut.

Startup Items



Goto the Apple Menu in the top left corner of the screen and select "GngHYa 'DfYZfYbWg'". Then click on "l gYfg/ ; fci dg".

